

## MODULAR SURGE PROTECTION DEVICE

# SP PLUS SERIES

### AC Surge Protection

The SP Plus provides all mode system protection and integrity for critical applications. A compact design listed to UL 1449 3rd Edition with robust surge capacity for long life and easy installation makes this unit ideal for all your surge protection requirements.



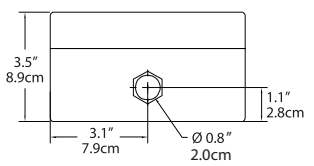
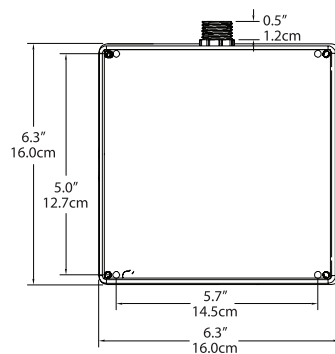
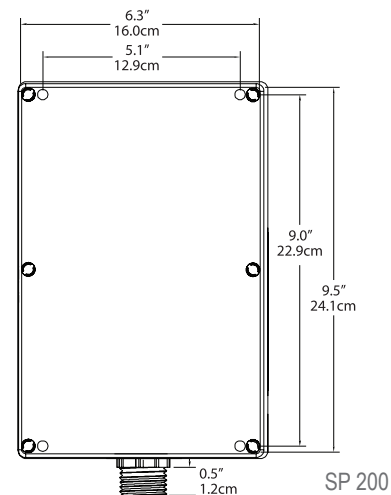
SP Plus Series

## FEATURES

- **Thermally Protected MOV** - allows maximum surge capacity, repetitive capability, and performance while maintaining safety requirements
- **Linear Sharing** - reduces stress to extend product life
- **Indicator Lights per Phase** - visual indication for protection integrity
- **Dry Contacts** - Form C contacts for remote monitoring (NO & NC)
- **Audible Alarm** - with failure indication
- **All Mode Protection** - L-N, L-G, N-G & L-L
- **Warranty** - 10 year

## STANDARDS

- UL 1449 3rd Ed. Listed
- NEC Article 100/285
- IEEE



SP 100

SP 200

## SPECIFICATIONS

SP Plus	SP 100	SP 200
<b>Performance</b>		
Connection	Parallel	Parallel
Nominal Operating Voltage	120 - 480 Vac	120 - 480 Vac
Operating Frequency	47 - 63 Hz	47 - 63 Hz
Surge Capacity per Mode	50 kA	100 kA
Surge Capacity per Phase	100 kA	200 kA
Nominal Discharge Current (In)	20 kA, SP 100 277/480 10 kA	20 kA
Maximum Surge Current Dissipation per Phase	100 kA	200 kA
IEEE Location	C-High, B-Medium	C-High, B-Medium
UL Location	Type 1 or Type 2	Type 1 or Type 2
Fault Rating (SCCR)	100 kAIC	100 kAIC
Response Time	<1 ns	<1 ns
Protection Provided	L-N, L-G, N-G, L-L (Split Phase, Wye); L-G, L-L (Delta)	L-N, L-G, N-G, L-L (Split Phase, Wye); L-G, L-L (Delta)
Certifications	UL 1449 3rd Edition Listed (E315238)	UL 1449 3rd Edition Listed (E315238)
<b>Mechanical</b>		
Dimensions - H x W x D	6.3" x 6.3" x 3.5" 16 cm x 16 cm x 8.9 cm	9.5" x 6.3" x 3.5" 24.1 cm x 16 cm x 8.9 cm
Weight (Max) lb, kg	3 lbs / 1.4 kg	5 lbs / 2.3 kg
Lug Range	None	None
Lead Length	≤ 1.5' (recommended)	≤ 1.5' (recommended)
Wire Gauge	#10 provided	#10 provided
Breaker Connection	30A (recommended)	30A (recommended)
<b>Environmental</b>		
Humidity (noncondensing)	5% to 95%	5% to 95%
Operating Temperature	-40°C to +85°C	-40°C to +85°C
Operating Altitude (feet)	Up to 12,000	Up to 12,000
Enclosure Type	NEMA 4 & NEMA 1 w / disable switch	NEMA 4 & NEMA 1 w / disable switch